

09

CHRYSLER SEBRING

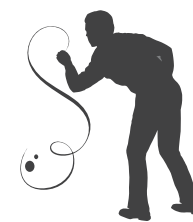




Sebring Limited in Bright Silver Metallic.



Sebring Limited in Light Sandstone Metallic.



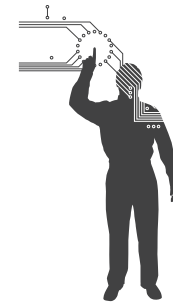
DESIGN

The jeweled quad headlamps assume an assertive sleek expression. From any angle, Sebring radiates a poise that invites glances of awe and intrigue. The sophisticated blend of elegance and distinctive body lines confirm Sebring's design ingenuity.

Just one look proves it. Sebring was designed to be remembered.



Sebring Limited interior in Dark Slate Gray Royale Leather trim.



TECHNOLOGY

Some car companies offer gadgetry. We offer purposeful technology. Like our uconnect systems, for example, uconnect gps provides entertainment, information, communication, and navigation, all in the space of a traditional stereo. Its 30GB hard drive allows you to store photos and playlists, as well as rip and stash digital music files from CDs, integrated USB port, or exterior input jack. Its 6.5-inch touch-screen LCD monitor allows for seamless navigating through uconnect functions.



*Sebring Limited interior in Medium Pebble Beige/Cream
with Tortoiseshell-style and Satin Silver accents.*

INTERIOR

1 **Heated/cooled cup holder.** Cold morning, hot beverage. How do you keep it that way? Opt for Sebring's available heated/cooled cup holder. What about a nice cool beverage during a long, hot drive? No problem. The heated/cooled cup holder is standard equipment on Limited and included in the available Electronics Convenience Group package on Touring.



2 **Power sunroof.** The available power express open/close sunroof can help let fresh air and sunshine into your first-class cabin. A sliding sunshade in the headliner provides maximum shielding from afternoon glare.

3 **Fold-flat front-passenger seatback and 60/40 split-folding rear seatback.** Sebring is not only satisfying to drive and ride along in, it turns into a genuine pleasure when it comes to packing and taking along your gear. Limited and Touring offer the fold-flat front-passenger seatback as standard equipment. It is also part of the available Safety/Security and Convenience Group package on LX. The 60/40 split-folding rear seatback is standard on all trim levels.

Eight-way power seat. An available eight-way power driver seat, combined with the standard manual tilt/telescoping steering column, helps you get comfortable behind the steering wheel. This is custom tailoring, indeed.

Stain Repel. This available stain-resistant, odor-resistant, antistatic seat fabric⁽¹⁾ employs a dual-action technology woven into the fabric itself to help repel and release stains without solvents.

4 **Seating for five.** Four-door access to seating for five is practical and convenient. Once inside, your rear-seat passengers will enjoy stretching out over a surprisingly large area with more than 36 inches of rear-seat leg room.

Heated seats. Take extra comfort in available heated front seats in Stain Repel seat fabric or upgrade even further to available heated leather-trimmed seating surfaces, standard on Limited.

5 **Trunk capacity.** Sebring offers over 13 cubic feet of cargo space; enough for golf clubs, rain gear, suitcases, and such — simultaneously.

Rear cargo organizer. The rear cargo organizer is so handy and easy to use, it might make you wonder how you ever organized your rear cargo without it. This clever feature is standard on Limited and included in the available Electronics Convenience Group package on Touring.

⁽¹⁾Not compatible with aftermarket fabric-protecting coatings.





Sebring Limited instrument panel with Tortoiseshell-style and Satin Silver accents.

TECHNOLOGY

1 uconnect The 6.5-inch touch-screen **uconnect gps** provides entertainment, information, communication, and navigation, all through an AM/FM/CD/DVD⁽¹⁾ stereo system. A 30GB hard drive allows you to store photos, playlists, maps, points of interest, as well as rip, stash, organize, and shuffle up to 4,200 digital music files from CDs, integrated USB port, or exterior input jack. The touch-screen allows you to easily change radio stations and play digital audio files. You also get the convenience of turn-by-turn navigation with real-time traffic updates using **SIRIUS® Satellite Radio**.⁽²⁾ The included **uconnect phone** provides hands-free, voice-activation capability with your Bluetooth® compatible phone.

2 uconnect studios Like a menu offering the best of in-vehicle technology, **uconnect studios** features standard **SIRIUS Satellite Radio**. Gain access to over 130 channels, including 100% commercial-free music, sports, news, talk, entertainment, traffic, and weather.

3 uconnect phone Go high-tech with an in-vehicle, voice-activated communication system that allows you to talk on your Bluetooth compatible phone virtually hands-free. Comes bundled with **uconnect gps** or can be added as a stand-alone feature.

4 uconnect web Turn your vehicle into a WiFi Hotspot. This Authentic Chrysler Accessory by Mopar allows every passenger in your vehicle to harness the power and entertainment value of the Internet at the same time. Subscription required, sold separately.



Steering wheel-mounted audio controls.

Conduct your own audio symphony without ever taking your hands off the steering wheel.

Boston Acoustics® Six world-renowned, premium Boston Acoustics speakers and a 276-watt amplifier are standard on Limited.

2 Remote Start. Sebring offers a remote start feature that operates by a push button on the key fob from up to 300 feet away. Without a doubt, the Remote Keyless/Illuminated Entry system puts a world of confidence and convenience at your fingertips. So here is the question: How do you roll down a car window from outside the car? Answer: When your car is a Sebring, you simply push a button to **operate windows from the key fob.**

Automatic temperature control system. Easy to read and easy to operate, an available automatic temperature control system helps make the most of your comfort while in your mobile environment.

3 Rear Seat Video Entertainment System (VES®). This available Authentic Chrysler Accessory by Mopar offers mobile entertainment for rear seat passengers.

⁽¹⁾uconnect in-dash DVD capability is not available in all states. See your dealer for details. ⁽²⁾SIRIUS, the SIRIUS dog logo, and related marks are trademarks of SIRIUS Satellite Radio Inc. All other trademarks, service marks and logos are the property of their respective owners. All rights reserved. Subscription required. Pricing and programming content are subject to change. Not available in Alaska and Hawaii. For full Terms & Conditions, visit SIRIUS.com.





1
2 3



4

★★★★★ HIGHEST GOVERNMENT
FIVE-STAR FRONT-IMPACT CRASH RATING

SAFETY AND SECURITY

1 Antilock Brake System (ABS). This standard safety and security feature affords premium stopping power using state-of-the-art electronics, providing faster response. ABS senses less than ideal conditions and helps to prevent wheel lockup, offering steering control under extreme braking and/or slippery road conditions.

Electronic Stability Program (ESP)⁽¹⁾ Designed to assist drivers in maintaining control of their vehicle at all times, the available ESP works in conjunction with Brake Assist and all-speed traction control to help maintain the vehicle's directional stability. Brake Assist helps the driver achieve maximum controlled braking in less than ideal situations. By constantly monitoring the driver's input against the vehicle's actual course, ESP will attempt to correct the vehicle's course when necessary by automatically applying the brake and/or reducing engine torque.

2 Electronic Vehicle Information Center (EVIC). Important stats such as distance to empty, temperature reading, compass, and average fuel economy are digitally displayed on the available EVIC. A Tire Pressure Monitoring Display is also part of the EVIC. As an additional safety benefit, all Sebring LX and Touring models include a **Tire Pressure Monitoring Warning Lamp.**

3 Sentry Key® Theft Deterrent System. This standard feature helps to deter vehicle theft by making it virtually impossible to start the engine without possession of the vehicle's key. The key fob operates the power deck lid, remote start, and remote power window down functions.

4 Five-Star frontal crash test rating.

Chrysler Sebring has earned a Five-Star crash test rating for frontal impact.⁽²⁾ This represents the highest possible frontal crash safety rating from the National Highway Traffic Safety Administration (NHTSA).

Air bags. Standard advanced multistage driver and front-passenger air bags⁽³⁾ provide nearly instantaneous front-seat occupant impact protection by matching air bag output to crash severity. Standard supplemental side-curtain air bags⁽³⁾ deploy from the headliner to provide side-impact protection to all outboard occupants.

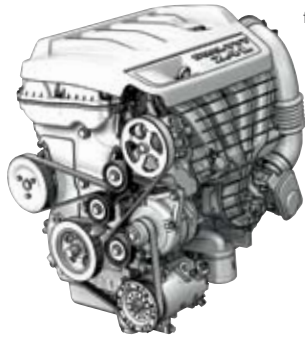
Thorax supplemental side air bags. Extra side-impact protection for driver and front seat passenger is standard on all trim levels.

Lifetime Powertrain Limited Warranty.⁽⁴⁾ As the owner of a Sebring, you deserve the ultimate peace of mind, so we provide you with the ultimate warranty: the Chrysler Lifetime Powertrain Limited Warranty. The first to be offered by any automaker. Ever. It demonstrates the confidence we have in our ability to produce quality vehicles with reliable and durable powertrains warranted to last a lifetime.



⁽¹⁾No system, no matter how sophisticated, can repeal the laws of physics or overcome careless driving actions. Performance is limited by available traction, which snow, ice and other conditions can affect. When the ESP warning lamp in the speedometer flashes, the driver needs to use less throttle and adapt speed and driving behavior to prevailing road conditions. Always drive carefully, consistent with conditions. Always wear seat belts. ⁽²⁾Star ratings are part of the U.S. Department of Transportation's safercar.gov program (www.safercar.gov). ⁽³⁾Always sit properly in the seat with the seat belt fastened. Children 12 and under should always be in a backseat correctly using an infant or child restraint system, or the seat belt positioned correctly for the child's age and weight. ⁽⁴⁾No deductible. See dealer for a copy of limited warranty details. Non-Transferable. Not available on certain fleet vehicles.

PERFORMANCE



2.4L World Engine.⁽¹⁾ For real fuel efficiencies and genuine four-door sedan comforts, this powerful I-4 engine delivers an **EPA estimated 21 city, 30 highway mpg.** Utilizing dual Variable Valve Timing (VVT) and a high-pressure die-cast aluminum cylinder block, the standard 2.4L World Engine features integrated structural ribbing to produce an exceptionally smooth and powerful 173 hp. It is matched to an equally advanced 4-speed automatic transmission.

2.7L Flex Fuel V6 engine.⁽¹⁾ The 2.7L Flex Fuel V6 engine produces 186 hp and 191-lb-ft torque, all while sipping gasoline or cleaner-burning E85. This modern power plant offers an **EPA estimated 19 city, 27 highway mpg** matched to an advanced 4-speed automatic transmission.



⁽¹⁾Not available in CA, CT, MA, ME, NJ, NY, OR, PA, RI, VT and WA. A 2.4L PZEV or 2.7L gas engine will be substituted.



3.5L High Output V6 engine. The available 3.5L High Output V6 engine is matched to a highly evolved 6-speed AutoStick[®] transaxle which generates 235 hp and 232 lb-ft of torque. Perhaps most surprisingly, all of this speed and power comes complete with an impressive **EPA estimated 16 city, 26 highway mpg.**

TRIM LEVEL LINEUP

LIMITED Designed to invigorate in every way, it gleams sophistication from a blend of elegance, contemporary design, and sleek lines outside and in. And it goes far beyond ordinary sedans by offering a truly premium interior with standard leather-trimmed seating for five, an eight-way power driver's seat, heated front seats, automatic temperature control, and a six-speaker Boston Acoustics[®] sound system.



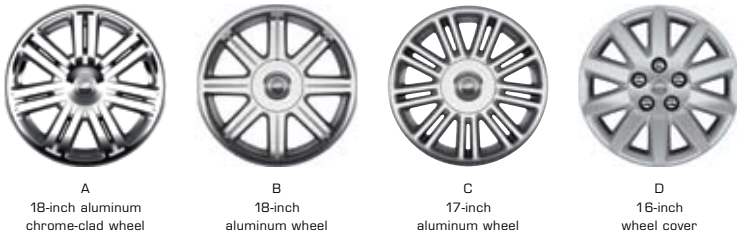
TOURING Well-equipped is a definite understatement with standard antilock brake system (ABS), segment-exclusive⁽¹⁾ available heated front cloth seats with stain-resistant, odor-resistant, antistatic Stain Repel seat fabric,⁽²⁾ a powerful 2.7L Flex Fuel V6 engine, fold-flat front-passenger seatback, 60/40 split-folding rear seatback, quad-halogen headlamps, and 17-inch aluminum wheels.



⁽¹⁾Based on 2007 *Automotive News* segmentation.
⁽²⁾Not compatible with aftermarket fabric-protecting coatings.

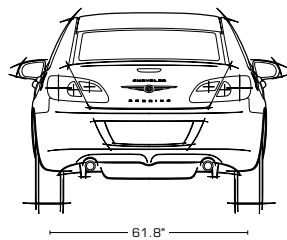
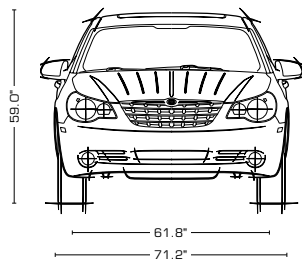
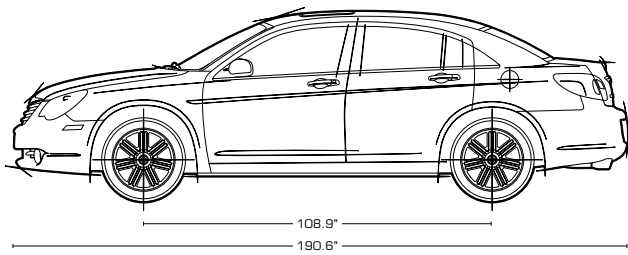
LX Offering so much more than mere practicality, it arrives complete with an extensive list of standard equipment and features, including 4-speed automatic transmission, Remote Keyless/Illuminated Entry, power windows and locks, air conditioning, electronic speed control, and AM/FM CD radio with MP3 auxiliary input jack.





	A	B	C	D
Sebring Limited (with 3.5L engine)	P		S	
Sebring Touring (with Ultimate Performance Tire & Wheel Group)		P	S	
Sebring LX				S

S = Standard. P = Included in package noted in parentheses.

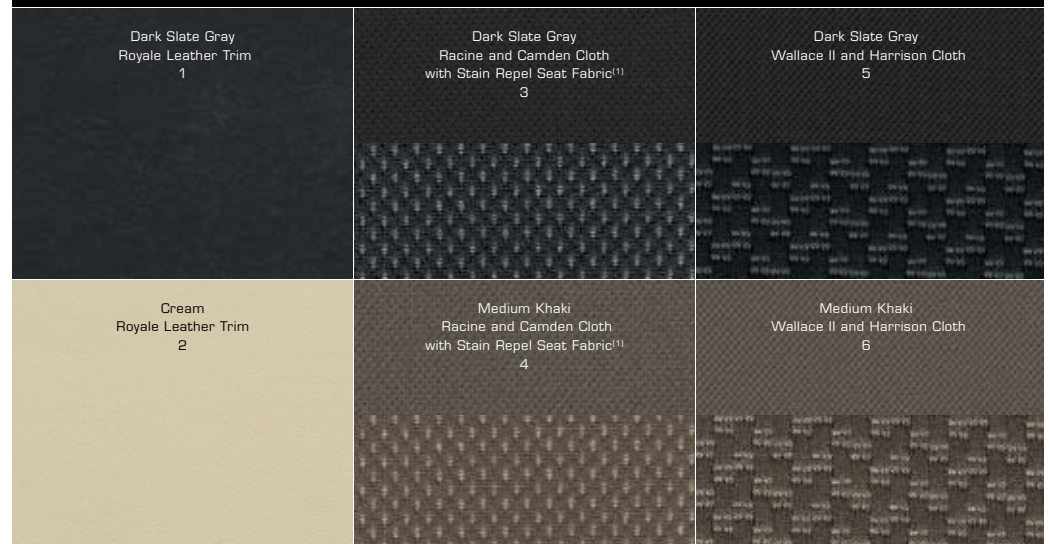


EXTERIOR COLORS

	Brilliant Black Crystal Pearl	Stone White	Inferno Red Crystal Pearl	Bright Silver Metallic	Clearwater Blue Pearl	Deep Water Blue Pearl	Light Sandstone Metallic	Silver Steel Metallic
Limited	1,2	1,2	1,2	1	1,2	1	1,2	1
Touring	3,4	3,4	3,4	3	3	3	3,4	3
LX	3,4,5,6	3,4,5,6	3,4,5,6	3,5	3,4,5,6	3,5	3,4,5,6	3,5

⁽¹⁾Not compatible with aftermarket fabric-protecting coatings.

INTERIOR COLORS



	LX	Touring	Limited
ENGINE/TRANSMISSION			
2.4L DOHC 16V I-4 World Engine⁽¹⁾ — 4-speed automatic	24H	24B	24M
2.7L DOHC 24V V6 Flex Fuel⁽¹⁾ — 4-speed automatic		28B	
3.5L High-Output V6 — 6-speed AutoStick [®]			26M
MECHANICAL			
Alternator — 120-amp	S	S	
— 140-amp (included with 2.7L engine)		P	S
Battery — 525-amp, maintenance-free	S	S	S
Brakes — Front disc, rear drum ABS	S		
— 4-wheel disc ABS		S	S
Engine Block Heater	O	O	O
Outside Temperature Display	S	S	S
Remote Start System — (Included in Electronics Convenience Group)		P	S
Speed Control — Electronic with stalk-mounted controls	S	S	S
Speedometer — 120-mph, with tachometer	S	S	S
Stabilizer Bars⁽²⁾ — Front/rear	S	S	S
Steering — Power, rack-and-pinion	S	S	S
Suspension — Touring ⁽²⁾	S	S	S
— Dampers, front and rear	S	S	S
EXTERIOR FEATURES			
Antenna — Removable short mast	S	S	S
Deck Lid Power Release	S	S	S
Door Handles — Body-color	S	S	
— Bright			S
Exhaust Tips — Dual, bright (included with 3.5L V6 engine)			P
Fog Lamps			S
Fuel Tank — 16.9-gallon	S	S	S
Glass — Tinted, front and rear Solar-Control	S	S	S
Grille — Bright/argent	S	S	S
Headlamps — Quad with headlamp-off time delay	S	S	S
— Automatic		S	S
Hood Insulation	S	S	S
Hood Prop Rod	S	S	S
Mirrors — Black, power	S		
— Body-color, power, heated		S	S
Power Express Open/Close Sunroof		O	O
Stone Guard — Front	S	S	S
Tires — P215/65R 16 BSW AS	S		
— P215/60R 17 BSW AS		S	S
— P215/55R 18 BSW AS Touring (included in Ultimate Performance Tire and Wheel Group with 2.7L engine on Touring and 3.5L V6 engine on Limited)		P	P
— Compact spare	S	S	S
Wheels — 16-inch wheel cover (W6L)	S		
— 17-inch aluminum wheel (WFW)		S	S
— 18-inch aluminum wheel (WPU) (included in Ultimate Performance Tire and Wheel Group)		P	
— 18-inch chrome-clad (WPP) (packaged with 3.5L V6 engine)			P
Windows — Express up/down front windows with remote down on key fob		S	S
Windshield Wipers — Variable intermittent	S	S	S

	LX	Touring	Limited
INTERIOR FEATURES			
Air Conditioning — Manual	S	S	
— Automatic temperature control (included in Electronics Convenience Group)		P	S
Air Filtration System	S	S	S
Analog Clock	S	S	S
Bezels — Color-keyed	S		
— Satin Silver		S	
— Tortoiseshell-style accent			S
Cargo Organizer — (included in Electronic Convenience Group)		P	S
Carpet — Floor	S	S	S
Console — Floor with fore/aft sliding armrest, with dual storage compartments	S		
— Floor with fore/aft sliding padded armrest, with dual storage compartments		S	S
Defroster — Rear window	S	S	S
Door Locks — Power	S	S	S
Electroluminescent Cluster — Includes outside temperature reading	S	S	S
Electronic Vehicle Information Center (EVIC) — Switches located on the center stack switch bank allow the driver to configure from a menu of useful information, including temperature and compass gauge, traveler/mini-trip computer, and tire pressure monitoring display (included in Electronics Convenience Group)		P	S
Floor Mats — Premium front and rear	S	S	S
Headliner — Base — Coat hooks, dome lamp, driver and passenger sun visor with mirror	S		
— Premium ⁽³⁾ — Coat hooks, rear-passenger assist handles, sun visor with illuminated mirrors, front/rear aimable LED lamps, driver and front-passenger sunglasses holder		S	
— Premium with universal garage door opener (included in Electronics Convenience Group)		P	S
Heated/Cooled Cup Holder — Built into front center console, maintains temperature range of 35° to 140° F (included in Electronics Convenience Group)		P	S
LED Lamps — Front and rear (included with premium headliner)		P	S
Mirror — Rearview, day/night	S	S	
— Rearview, auto-dimming with microphone (included in Electronics Convenience Group)		P	S
Power Outlets — 12-volt center stack-mounted	S	S	S
— 12-volt center console-mounted	S	S	S
Shift Knob — Urethane	S		
— Leather-wrapped with chrome accent		S	S
Steering Column — Tilt/telescoping, manual	S	S	S
Steering Wheel — Sport	S		
— Leather-wrapped with audio controls		S	S
— Tortoiseshell-style upper accent			S
Storage Bin — Instrument panel	S	S	S
Windows — Tinted with front and rear Solar-Control	S	S	S
— Power, driver one-touch down	S		
— Power, front with one-touch up/down, with remote down on key fob		S	S
SEATING			
Front — Cloth, low-back bucket with driver-side front seat pocket	S		
— Stain Repel Seat Fabric ⁽⁴⁾ low-back bucket (included in Safety/Security and Convenience Group)	P	S	
— Leather-trimmed, low-back bucket			S
— Fold-flat passenger seatback (included in Safety/Security and Convenience Group)	P	S	S
— Power, 8-way driver's seat		O	S
— Heated (included in Electronics Convenience Group)		P	S
— Manual Driver Lumbar Adjuster	S	S	S
— Manual Driver Height Adjuster	S		
Rear — 60/40 split-folding seatbacks with fold-out armrest with integrated cup holders	S	S	S

	LX	Touring	Limited
ENTERTAINMENT SYSTEMS			
Radios — AM/FM/CD/MP3 (RES)	S		
— AM/FM/6-Disc DVD/MP3 (REQ)		S	S
uconnect — uconnect gps — Includes AM/FM/CD/DVD ¹⁵ /HDD/MP3 radio with navigation and touch screen/voice recognition operation and real-time traffic updates (RER)		O	O
— uconnect studios — Includes SIRIUS Satellite Radio System ¹⁶ with one-year subscription	S	S	S
— uconnect web — Subscription required, sold separately (Authentic Chrysler Accessory by Mopar)	O	O	O
Sound Systems — Four speakers	S		
— Six speakers		S	
— Six, Boston Acoustics [®] speakers			S
SAFETY AND SECURITY			
Air Bags ¹⁷ — Front advanced multistage driver and passenger	S	S	S
— Supplemental side-curtain for front and rear outboard occupants	S	S	S
— Supplemental front seat-mounted	S	S	S
Child Seat Anchor System (LATCH)	S	S	S
Door Locks — Rear child protection	S	S	S
Electronic Stability Program ¹⁸ — with Brake Assist and all-speed traction control		O	O
Inside Emergency Trunk Lid Release	S	S	S
Remote Keyless/Illuminated Entry	S	S	S
Seat Belts — Front three-point with shoulder adjustment	S	S	S
— Rear, outboard and center three-point	S	S	S
Security Alarm — (included in Safety/Security and Convenience Group and Electronic Convenience Group)	P	P	S
Sentry Key[®] Theft Deterrent System	S	S	S
Tire Pressure Monitoring System — Included in the Electronic Vehicle Information Center (EVIC), displays individual tire pressure for all four tires (included in Electronics Convenience Group)		P	S
Tire Pressure Monitoring Warning Lamp	S	S	
uconnect phone ¹⁹ — Included with uconnect gps, includes auto-dimming rearview mirror with microphone		O/P	O/P
PACKAGES			
Electronics Convenience Group — HomeLink [®] universal garage door opener, auto-dimming rearview mirror, cargo organizer, heated/cooled front console cup holder, instrument cluster with display screen (EVIC), automatic temperature controls, remote start system, security alarm, and heated front seats		O	
Safety/Security and Convenience Group — Security alarm, Stain Repel premium cloth seats, fold-flat front-passenger seatback	O		
Smoker's Group — Removable ash receiver, cigar lighter	O	O	O
Ultimate Performance Tire and Wheel Group — 18-inch aluminum wheel (WPU), P215/55R 18 BSW AS tires (available only with 2.7L engine) (TGL)		O	

S = Standard. P = Included in package noted in parentheses. O = Optional.

¹⁵Not available in CA, CT, MA, ME, NJ, NY, DR, PA, RI, VT and WA. A 2.4L PZEV or 2.7L gas engine will be substituted. ¹⁶Late availability on vehicles with 2.4L engine. ¹⁷Sunglass holder omitted with available power express open/close sunroof. ¹⁸Not compatible with aftermarket fabric-protecting coatings. ¹⁹uconnect-in-dash DVD capability is not available in all states. See your dealer for details. ²⁰"SIRIUS", the SIRIUS dog logo and related marks are trademarks of SIRIUS Satellite Radio, Inc. All other trademarks, service marks and logos are the property of their respective owners. All rights reserved. Subscription required. Pricing and programming content are subject to change. Not available in Alaska and Hawaii. For full Terms & Conditions, visit SIRIUS.com. ²¹Certified to the Federal Regulations that allow less forceful front air bags. Always use seat belts. Children 12 and under should always be in a backseat correctly using an infant or child restraint system, or the seat belt positioned correctly for the child's age and size. ²²No system, no matter how sophisticated, can repeat the laws of physics or overcome careless driving actions. Performance is limited by available traction, which snow, ice and other conditions can affect. When the ESP warning lamp in the speedometer flashes, the driver needs to use less throttle and adapt speed and driving behavior to prevailing road conditions. Always drive carefully, consistent with conditions. Always wear seat belts. ²³Must use Bluetooth[®] compatible phone. Chrysler, Mopar, Sentry Key and uconnect are registered trademarks of Chrysler LLC. HomeLink is a registered trademark owned by Johnson Controls, Inc. Bluetooth is a registered trademark of Bluetooth SIG, Inc. Boston Acoustics is a registered trademark of Boston Acoustics, Inc. iPod is a registered trademark of Apple Inc. All rights reserved.

	LX	Touring	Limited
ENGINE SPECIFICATIONS			
Engine Type	2.4L	2.7L ¹¹	3.5L ¹¹
Horsepower (SAE net @ rpm)	173 @ 6,000	186 @ 5,500	235 @ 6,400
Torque (lb-ft @ rpm)	166 @ 4,400	191 @ 4,000	232 @ 4,000
Displacement (cc)	2,360	2,736	3,518
Bore x Stroke (in)	3.46 x 3.82	3.38 x 3.09	96 x 81
Compression Ratio	9.5:1	9.9:1	10.0:1
Valve Train Configuration	16V, DOHC	24V, DOHC	24V, SOHC
WEIGHT AND CAPACITIES			
Recommended Fuel	Regular Unleaded	Regular Unleaded	Regular Unleaded
Fuel Tank Capacity (gal)	16.9 ²⁴	16.9	16.9
Fuel Economy ²⁵ — City (mpg)	21	19	16
— Highway (mpg)	30	27	26
Base Curb Weight (lb)	3,313	2.4L – 3,324 2.7L – 3,422	2.4L – 3,353 3.5L – 3,525
Towing Capacity (lb)	1,000	2,000	2,000
EXTERIOR DIMENSIONS⁽²⁴⁾			
Wheelbase	108.9	108.9	108.9
Overall Length	190.6	190.6	190.6
Overall Width	71.2	71.2	71.2
Overall Height	59.0	59.0	59.0
Track — Front	61.8	61.8	61.8
— Rear	61.8	61.8	61.8
Turning Diameter (ft)	36.5	36.5	36.5
INTERIOR DIMENSIONS⁽²⁴⁾			
Maximum Seating Capacity	5	5	5
Front — Head Room	40.1	40.1	40.1
— Leg Room	42.4	42.4	42.4
— Shoulder Room	56.4	56.4	56.4
— Hip Room	53.5	53.5	53.5
Rear — Head Room	38.4	38.4	38.4
— Leg Room	36.2	36.2	36.2
— Shoulder Room	56.4	56.4	56.4
— Hip Room	53.2	53.2	53.2
Passenger Volume	100.9	100.9	100.9
Cargo Volume (cu ft)	13.6	13.6	13.6
Total Interior Volume (cu ft)	114.5	114.5	114.5

¹¹Optional on model listed. ²²EPA est mpg. ²³2.4L PZEV fuel tank capacity is 18.5 gallons. ²⁴All dimensions in inches unless otherwise noted.

CHRYSLER.COM

Our Web site offers detailed information on all Chrysler products. You can virtually assemble any vehicle you like. Simply choose the model with your favorite color combinations, equipment, and features — and then price it all out.

CALL 1-800-CHRYSLER.

Our friendly and knowledgeable product information specialists are available seven days a week, 8 a.m.–midnight (EST) to answer your questions.

Lifetime Powertrain Limited Warranty. No deductible. See dealer for a copy of limited warranty details. Non-Transferable. Not available on SRT® Hybrid System components (including transmission) and certain fleet vehicles.

Warranty. New Chrysler vehicles are covered by a 3-year or 36,000-mile Basic Limited Warranty. See your dealer for a copy of this limited warranty. Excludes normal maintenance and wear items.

Chrysler Financial. Chrysler Financial delivers Chrysler, Jeep, and Dodge customers a personal, worry-free automotive financing experience. More than just another finance company with competitive rates, Chrysler Financial stands behind you through life's twists and turns by offering fast approvals, flexible terms and unparalleled personalized service. Visit cf.com or your Chrysler dealer to discover all that Chrysler Financial offers. Taking care of you, all along the way.

Chrysler Auto Insurance!⁽¹⁾ The only insurance guaranteed to repair your vehicle using Authentic Chrysler Collision Repair Parts by Mopar for as long as you own your Chrysler vehicle, and up to \$100 off your deductible when those repairs are done at a Chrysler dealership — all at rates that are tough to beat. For a free quote, visit chryslerautoinsurance.com or call (877) 244-1531 and mention keycode QL8XXX.

Chrysler Service Contracts. Your Chrysler is one of the most inspiring vehicles on the road. Why not protect your investment with a Chrysler Service Contract or Maintenance Plan? For more information, see your Chrysler dealer, call (800) 442-2666 or visit servicecontracts.chrysler.com.

Authentic Chrysler Accessories by Mopar are designed specifically for your Chrysler vehicle for exceptional fit, finish and performance. Visit your dealership or mopar.com.

VISIT YOUR DEALER.

Your Chrysler dealer's knowledgeable and professionally trained staff will guide you through the shopping process with expert advice.

uconnect. This suite of integrated digital systems bundles entertainment, information, and communication. For more information, visit your dealer.

SIRIUS. SIRIUS Satellite Radio delivers over 130 channels, including 100% commercial-free music, sports, news, talk, entertainment, traffic and weather. Factory-installed SIRIUS Satellite Radio includes a one-year subscription. For more information, go to SIRIUS.com.

SmartWay. The SmartWay® certification system identifies each vehicle's air pollution and greenhouse gas performance.⁽²⁾ Lower emissions earn a higher score, and those vehicles with the best scores receive certification. Sebring, when equipped with a 2.4L World Engine, is SmartWay certified.

Chrysler Rewards Visa⁽³⁾ Earn 5 points per dollar charged at your Chrysler dealership and 1 point per dollar everywhere Visa® is accepted. Whether you're saving points for your down payment or for your vehicle's scheduled maintenance, it pays to be a Chrysler Rewards Visa cardholder. For more information or to apply, visit chryslercreditcard.com or call (800) 478-6179.

Chrysler Gift Gallery pays tribute to the finer things in life. With everything from men's and women's apparel to accessories and designer collectibles, you are sure to take your style to the next level. View the entire collection of authentic merchandise at chrysler.com/giftgallery.

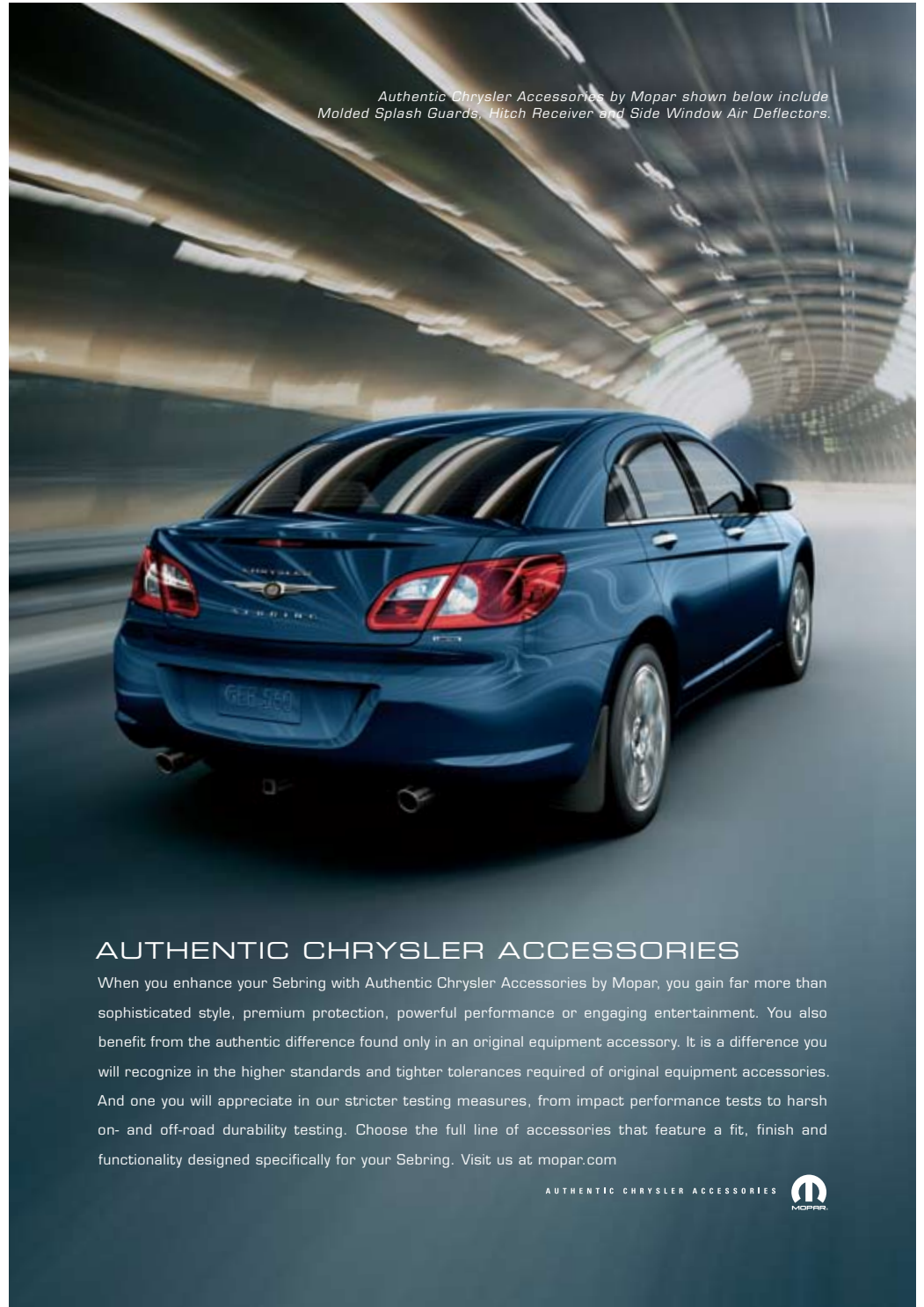
Honoring Those Who Serve. Chrysler LLC proudly supports the members of the U.S. Armed Forces and their families.

⁽¹⁾Insurance is underwritten by member companies of American International Group, Inc. ⁽²⁾Based on 2008 EPA SmartWay Designation. Please visit www.epa.gov/greenvehicles for a list of the specific vehicle types that meet the SmartWay standards. SmartWay is a service mark of the U.S. Environmental Protection Agency. ⁽³⁾The Chrysler Rewards Visa credit card is issued by FIA Card Services, N.A.



All product illustrations, specifications and competitive comparisons are based upon current information at the time of publication approval. Although descriptions are believed correct, complete accuracy cannot be guaranteed. Chrysler LLC reserves the right to make changes at any time, without notice or obligation, in prices, specifications, equipment, colors and materials, and to change or discontinue models. Some of the equipment shown or described throughout this catalog is available at extra cost and/or may be subject to late availability. See your dealer for the latest information.

Authentic Chrysler Accessories by Mopar shown below include Molded Splash Guards, Hitch Receiver and Side Window Air Deflectors.



AUTHENTIC CHRYSLER ACCESSORIES

When you enhance your Sebring with Authentic Chrysler Accessories by Mopar, you gain far more than sophisticated style, premium protection, powerful performance or engaging entertainment. You also benefit from the authentic difference found only in an original equipment accessory. It is a difference you will recognize in the higher standards and tighter tolerances required of original equipment accessories. And one you will appreciate in our stricter testing measures, from impact performance tests to harsh on- and off-road durability testing. Choose the full line of accessories that feature a fit, finish and functionality designed specifically for your Sebring. Visit us at mopar.com

AUTHENTIC CHRYSLER ACCESSORIES 