

09 CHRYSLER 300



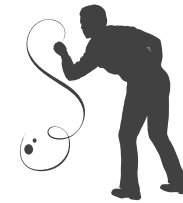


*300C in Bright Silver Metallic.*



*The Chrysler 300 is the best-selling Full-Size Luxury Sedan.<sup>(1)</sup>*

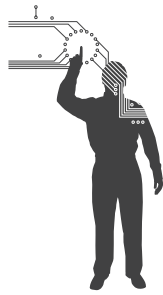
<sup>(1)</sup>Based on R.L. Polk & Co. CYE 2006-2007 full-size luxury total registrations in the U.S.



## DESIGN

The most awarded new car ever<sup>(1)</sup> is crafted to break free of the conventional and stand apart from every other vehicle in its class. From its striking broad-shouldered American stance to its beautifully executed interiors, 300 seamlessly blends elegance with technical sophistication for an absolutely unmatched presence.

<sup>(1)</sup>Based on automotive awards won within the introductory model year (2005).



## TECHNOLOGY

300 embraces state-of-the-art technologies. The innovative Adaptive Cruise Control (ACC)<sup>11</sup> adjusts automatically to moving traffic. And the revolutionary uconnect provides a suite of integrated available digital systems on a 30GB hard drive bundling entertainment, information, and communication.

<sup>11</sup>ACC is a driver convenience system, not a substitute for active driver involvement. The driver must remain aware of traffic conditions and be prepared to use brakes to avoid collisions.





## PERFORMANCE

Agility, command, and control coexist with 300's ready power. This luxury sedan employs cutting-edge engine technologies to deliver a quiet, comfortable ride along with best-in-class<sup>(1)</sup> 359 horsepower and 389 lb-ft of torque. The redesigned 5.7-liter Variable Valve Timing (VVT) HEMI<sup>®</sup> V8 with Multi-Displacement System (MDS)<sup>(2)</sup> standard on 300C, saves fuel without sacrificing performance.

<sup>(1)</sup>Ward's 2008 Automotive segmentation.  
<sup>(2)</sup>16 city, 25 highway, est. EPA mpg for 5.7L HEMI V8.



*300C interior in Khaki/Light Graystone.*

## INTERIOR

**1 Bolstered SRT® Seats.** Even the most luxurious cabin is enhanced with exclusive SRT leather-trimmed, microfiber suede-accented performance seats. The bolstered sides keep driver and passenger firmly planted when cornering.

**2 Power sunroof.** Enjoy open-air driving whenever weather permits. The available one-touch power sunroof lets you press the button once to vent the roof, one more time to open it all the way, and close it with one touch. It also includes automatic reverse for “pinch protection” should there be any obstruction. At the very front of the sunroof is an aerodynamic **diffuser** to reduce wind noise, and a high-strength weather seal around the sunroof ensures that no rain enters the vehicle. Meanwhile, a **sliding sunshade** in the headliner provides maximum shielding from afternoon glare.

**3 Heated rear seats.** Taking the chill out of cold winter days, your 300C passengers will find themselves as warm as their surroundings in available heated rear seats. The backseat passengers will have the same level of comfort as front seat passengers.

**4 Interior accents.** Available Genuine California Walnut accents on the door pulls, steering wheel, and console set a sophisticated tone for a cabin as luxurious as it is spacious, with eight-way power adjustable driver’s seat, soft touch door armrests, center console with French seams, and Satin Silver trim accents throughout. Available options include an eight-way power adjustable front-passenger seat with leather trim, adjustable pedals, automatic dual zone temperature control, steering wheel-mounted audio controls, and Boston Acoustics® audio system with a 276-watt digital amplifier and a six-disc CD changer with MP3 capability.

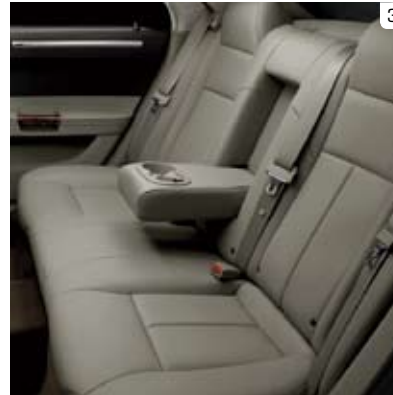
**5 300C Heritage Edition.** It features the redesigned 5.7-liter HEMI® Variable Valve Timing (VVT) V8 engine with fuel-saving Multi-Displacement System (MDS) and is adorned with special badging, Poplar Wood interior accents, well-bolstered low-back Napa leather-trimmed bucket seats, heated first- and second-row seats and Berber floor mats. Also included with the Heritage Edition is **uconnect tunes**, paired with an eight-speaker Boston Acoustics® sound system (including subwoofer) with a 368-watt digital amplifier plus Dolby Pro Logic II Surround Sound. High-tech features surround you, including the available **uconnect gps** with navigation.

**6 MP3 auxiliary jack.** The AM/FM radio also allows you to play your favorite external devices with an MP3 auxiliary jack.

**7 LED-illuminated cup holders.** The blue-green glow of LED-illuminated front cup holders helps you find your beverages easily when driving at night. Available LED lighting also illuminates the front and rear map pockets.



1 2  
3 4



5 6



7



*300C instrument panel with Tortoiseshell-style accents.*



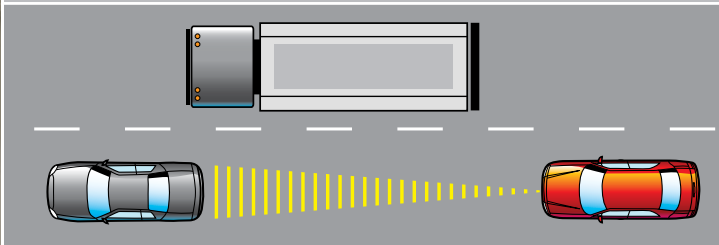
1

## TECHNOLOGY

**1 uconnect** The 6.5-inch touch-screen uconnect tunes provides entertainment, information, and communication, all through an AM/FM/CD/DVD<sup>(1)</sup> stereo system. A 30GB hard drive allows you to store photos, playlists, and songs, as well as rip, stash, organize, and shuffle up to 6,700 digital music files from CDs, integrated USB port, or exterior input jack. The touch screen allows you to easily change radio stations and play digital audio files. Or, step up to **uconnect gps**, which includes all the same great features but adds the convenience of turn-by-turn navigation with real-time traffic updates using **SIRIUS® Satellite Radio**.<sup>(2)</sup> The included **uconnect phone** provides hands-free, voice-activation capability with your Bluetooth® compatible phone.



2 3



4

**SmartBeam™ Intelligent Headlamps.** These available headlamps automatically adjust intensity for improved nighttime visibility, providing optimal lighting in even the darkest conditions. This smart system automatically adjusts to ambient light and dims for oncoming traffic.

**2 Rear Seat DVD.** A state-of-the-art entertainment option is available as a Video Entertainment System (VES®) with inputs for audio and video. The DVD player has a seven-inch liquid crystal display (LCD), remote control, and two wireless, multi-channel headphones, with auxiliary input jacks on the faceplate for video, games, and portable MP3 players.

**3 Adaptive Cruise Control (ACC).**<sup>(3)</sup> This system can detect a vehicle directly in front, so it can then adjust the speed of your vehicle as traffic flow changes. It automatically adjusts cruise control speed so you are always moving with traffic at a set distance. And in certain situations, it even warns the driver to apply the brakes manually. ACC uses LIDAR (Light Detection and Ranging) to detect other vehicles as far as 328 feet away. ACC is available on 300C.

**4 Electronic Vehicle Information Center (EVIC).** It is programmable and can access up to 128 vehicle functions, including outside temperature, fuel economy readouts, a compass, and a mini-trip computer.

**uconnect studios** Like a menu offering the best of in-vehicle technology, uconnect studios lets you either bundle or select individual available features such as **SIRIUS Satellite Radio**. Gain access to over 130 channels, including 100% commercial-free music, sports, news, talk, entertainment, traffic, and weather. Comes bundled with uconnect gps or can be added as a stand-alone feature. The available **SIRIUS Backseat TV™**<sup>(2)</sup> allows live streaming video from three favorite family channels — Nickelodeon,™ Disney Channel, and Cartoon Network. For added value, front seat passengers can enjoy separate programming on SIRIUS Satellite Radio while rear seat occupants view SIRIUS Backseat TV.

**uconnect phone** Go high-tech with an in-vehicle, voice-activated communication system that allows you to talk on your Bluetooth enabled phone virtually hands-free. Comes bundled with uconnect gps or can be added as a stand-alone feature.

**uconnect web** Turn your vehicle into a WiFi Hotspot with this Authentic Chrysler Accessory by Mopar. Subscription required, sold separately.

<sup>(1)</sup>uconnect in-dash DVD capability is not available in all states. See your dealer for details. <sup>(2)</sup>"SIRIUS," the SIRIUS dog logo, "SIRIUS Backseat TV" and related marks are trademarks of SIRIUS Satellite Radio Inc. All other trademarks, service marks and logos are the property of their respective owners. All rights reserved. Subscription required. Pricing and programming content are subject to change. Not available in Alaska and Hawaii. For full Terms & Conditions, visit SIRIUS.com. © 2008 Viacom International Inc. All rights reserved. Nickelodeon, The Adventures of Jimmy Neutron Boy Genius and all related titles, logos and characters are trademarks of Viacom International Inc. DISNEY CHANNEL and The DISNEY CHANNEL LOGO are trademarks of Disney Enterprises, Inc. and used with permission. CARTOON NETWORK and the logo are trademarks of © 2008 Cartoon Network. A Time Warner Company. All rights reserved. <sup>(3)</sup>ACC is a driver convenience system, not a substitute for active driver involvement. The driver must remain aware of traffic conditions and be prepared to use brakes to avoid collisions.

## PERFORMANCE

### 1 Multi-Displacement System (MDS)<sup>(1)</sup>

It brings fuel economy to HEMI® power. MDS allows the redesigned 5.7-liter Variable Valve Timing (VVT) HEMI V8 with MDS to operate with the fuel efficiency of only four cylinders as needed. The MDS system software has been updated so the engine will spend more time in four-cylinder mode, providing a fuel economy benefit,<sup>(1)</sup> depending on driving habits and conditions. The engine idles on eight cylinders for maximum smoothness, uses all eight for acceleration and heavy loads, and seamlessly transitions to four cylinders based on torque requirements, even at interstate highway speeds. The Fuel Economy Indicator in the Electronic Vehicle Information Center (EVIC) lets you know when you are driving in fuel-saver mode.

2 **Performance data.** The instrument cluster unique to 300C SRT8® features deep-tunneled whiteface racing-inspired gauges with italicized numbers and a 180-mph speedometer. It also features a **Reconfigurable Display** for performance data such as 0-60 times, ¼ mile times, ½ mile times and friction circle. Once you purchase a 300C SRT8, you are invited to the SRT® Track Experience, a one-day driving course conducted by a professional driving school on select tracks. For more info, visit [SRTTrackExperience.com](http://SRTTrackExperience.com).

3 **All-Wheel Drive (AWD) with Automatic Disconnect.** It supplies power to both axles, delivering excellent balance for improved control under difficult road conditions. AWD provides better straight line traction and cornering stability in nearly all conditions, especially on wet, slippery roads. The system seamlessly transitions between rear-wheel drive and all-wheel drive with no driver input. When all-wheel drive is not required, the system automatically disconnects the front axle and opens the transfer case from the drivetrain to reduce friction and rotational mass. The system provides optimal traction, performance and an improvement in fuel economy.<sup>(2)</sup> Only Chrysler offers these two independent technologies together. Available on 300C, 300 Limited and 300 Touring.

**300C SRT8.** Blending high performance and precision, it is powered by the 6.1-liter SRT HEMI V8 engine with 425 horsepower and 420 lb-ft of torque. SRT8 offers the refinement of a finely tuned fully independent four-wheel suspension, Brembo® Performance brakes with four-piston calipers, and a 5-speed AutoStick® transmission for sports-car handling dynamics. A high beltline, with body-color fascia and chin spoiler, complete this picture of the power elite. With an artfully balanced rear-wheel-drive platform and a wealth of luxurious appointments, SRT8 combines abundant power with forward technology and an available KICKER® SRT® high-performance 13-speaker sound system with a 100-watt subwoofer and 322-watt digital amplifier.

<sup>(1)</sup>16 city, 25 highway, est. EPA mpg for 5.7L HEMI V8. <sup>(2)</sup>Based on combined city/highway EPA est. mpg.





1  
2

★★★★★ HIGHEST GOVERNMENT FRONT-IMPACT CRASH RATING



3 4



## SAFETY AND SECURITY

**1 Safety Systems.** No one wants to test a vehicle's impact resistance, but 300 is ready, if it occurs, with **unibody safety cage** construction with front crumple zones built into the stiff body cage to absorb impact energy. **Advanced multistage front air bags<sup>(1)</sup>** deploy in staged amounts, depending on impact severity, while available **front seat-mounted side air bags<sup>(1)</sup>** with **supplemental front and rear side-curtain air bags<sup>(1)</sup>** offer additional side-impact protection to front and rear outboard occupants.

**Five-Star frontal crash test rating.** Chrysler 300 has earned a Five Star crash test rating for frontal impact.<sup>(2)</sup> This represents the highest possible frontal crash safety rating from the National Highway Traffic Safety Administration (NHTSA).

**2 Rain-Sensing Wipers.** Standard on 300C, SRT8,<sup>®</sup> 300C and Limited, they are activated via an infrared sensor located on the inside of the windshield just below the rearview mirror. When rain falls, the sensor adjusts wiper interval speed based on the speed of the vehicle and severity of the rain.

**3 Electronic Stability Program (ESP).<sup>(3)</sup>** If a panic braking situation is detected, this program helps almost instantaneously. The available Electronic Stability Program with Brake Assist and all-speed traction control can correct the vehicle's course by automatically applying the brake and/or reducing engine torque. Brake Assist will apply maximum pressure to the brake booster, and all-speed traction control helps provide directional stability.



**Remote Start.** This available factory-installed feature can start your vehicle from 328 feet away. For added peace of mind, the **Sentry Key<sup>®</sup> Engine Immobilizer** assures that only your personal ignition key operates your 300 because of its special encoded design.

**4 ParkSense<sup>®</sup> Rear Park Assist System.<sup>(4)</sup>** For driving with confidence in nearly all conditions, 300 models are equipped with state-of-the-art technologies that help you keep control, even when parking. The available ParkSense Rear Park Assist System uses sound waves to detect nearby obstacles, allowing you to monitor what is behind your vehicle with audio alerts to help grab your attention.

**Lifetime Powertrain Limited Warranty.<sup>(5)</sup>** Because you deserve the ultimate peace of mind, we now offer the best warranty in the business — our exclusive, Lifetime Powertrain Limited Warranty. It is the first of its kind offered by any automaker and it means you are covered for as long as you own your 300. It demonstrates the confidence we have in our ability to produce quality vehicles with reliable and durable powertrains.



<sup>(1)</sup>Always sit properly in the seat with the seat belt fastened. Children 12 and under should always be in a backseat correctly using an infant or child restraint system or the seat belt positioned correctly for the child's age and weight. <sup>(2)</sup>Star ratings are part of the U.S. Department of Transportation's SaferCar.gov program ([www.safercar.gov](http://www.safercar.gov)). <sup>(3)</sup>No system, no matter how sophisticated, can repeal the laws of physics or overcome careless driving actions. Performance is limited by available traction, which snow, ice and other conditions can affect. When the ESP warning lamp flashes, the driver needs to use less throttle and adapt speed and driving behavior to prevailing road conditions. Always drive carefully, consistent with conditions. Always wear your seat belt. <sup>(4)</sup>Always check entire surroundings before backing up. <sup>(5)</sup>No deductible. See dealer for a copy of limited warranty details. Non-Transferable. Not available on SRT<sup>®</sup> and certain fleet vehicles.

## TRIM LEVEL LINEUP

**SRT8®** The powertrain represents a higher level of HEMI® performance, as its 6.1-liter SRT® HEMI V8 produces a formidable 425 horsepower and 420 lb-ft of torque. First-class handling sets it apart, as well as enveloping drivers in a rich interior featuring forward technology. 300C SRT8 takes high performance to the next plateau.



**300C** Dramatic looks, finely appointed interiors and the breathtaking performance of the redesigned 5.7-liter HEMI Variable Valve Timing (VVT) V8 with fuel-saving Multi-Displacement System (MDS) give it an unmistakable brilliance. High-tech innovations abound inside, from the standard Boston Acoustics® audio system to available Adaptive Cruise Control (ACC),<sup>(1)</sup> available uconnect gps with navigation, and available uconnect studios offering SIRIUS Backseat TV.™



**LIMITED** Power and efficiency run hand in hand with the 250-horsepower 3.5-liter High Output V6 engine. Available Torino leather trim for upscale interior comfort, available Rain-Sensing Wipers for safety in wet conditions, and available all-wheel drive (AWD) for road-gripping command are features that make 300 Limited an extraordinary package. Abundant high-tech options include SmartBeam™ intelligent headlamps.



**TOURING** The robust 3.5-liter High Output 250-horsepower V6 engine under the hood provides power in full measure, with standard antilock brake system (ABS) and an Electronic Stability Program (ESP)<sup>(2)</sup> with Brake Assist and all-speed traction control, smoothly supported by a five-link independent rear-wheel suspension. Available all-wheel drive includes a five-speed AutoStick® transmission.



**LX** Sleek styling, great handling, remarkable value. LX gives you 18 city and 26 highway mpg with the standard 2.7-liter V6, a durable, quiet engine that delivers 178 horsepower. Remote keyless/illuminated entry, tilt/telescoping steering column, and eight-way power driver's seat surround you with convenience. An AM/FM CD radio with auxiliary input for MP3 players comes standard.



<sup>(1)</sup>ACC is a driver convenience system, not a substitute for active driver involvement. The driver must remain aware of traffic conditions and be prepared to use brakes to avoid collisions. <sup>(2)</sup>No system, no matter how sophisticated, can repeal the laws of physics or overcome careless driving actions. Performance is limited by available traction, which snow, ice and other conditions can affect. When the ESP warning lamp flashes, the driver needs to use less throttle and adapt speed and driving behavior to prevailing road conditions. Always drive carefully, consistent with conditions. Always wear your seat belt.



A  
20-inch forged  
aluminum wheel



B  
20-inch ultra-brite  
aluminum wheel



C  
18-inch chrome-clad  
aluminum wheel



D  
18-inch chrome-clad  
aluminum wheel



E  
17-inch  
aluminum wheel



20-inch, 12-spoke  
chrome-plated wheel



18-inch, 9-spoke  
chrome-plated wheel

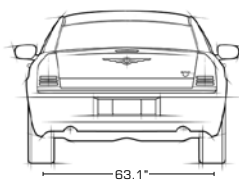
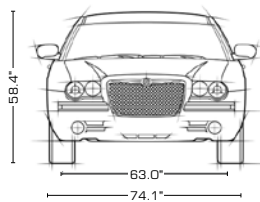
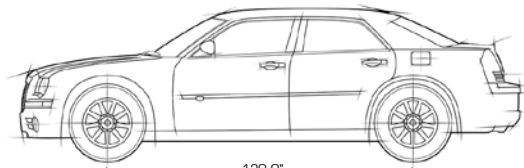


17-inch, 7-spoke  
chrome-plated wheel

CHRYSLER ACCESSORIES  
Authentic Chrysler Accessories by Mopar  
are also available to personalize your Chrysler 300.

	A	B	C	D	E
300C SRT8®	S				
AWD Models (300C, Limited, Touring)			S		
300C (with Heritage Group)		P		S	
300 Limited				S	
300 Touring				S	
300 LX					S

S = Standard. P = Included in package noted in parentheses.

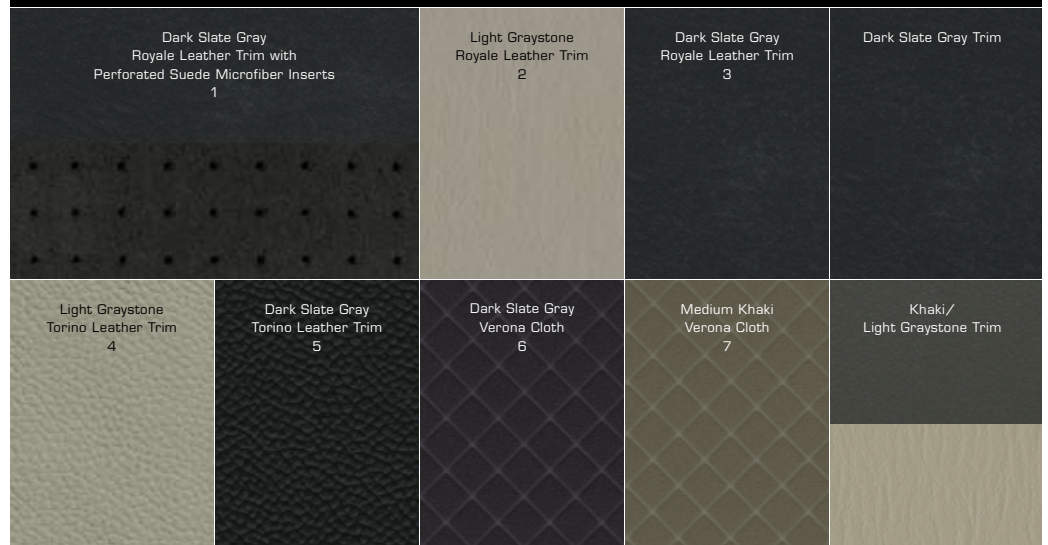


## EXTERIOR COLORS

	Light Sandstone Metallic	Bright Silver Metallic	Clearwater Blue Pearl	Brilliant Black Crystal Pearl	Inferno Red Crystal Pearl	Cool Vanilla	Deep Water Blue Pearl	Dark Titanium Metallic
300C SRT8®		1		1	1		1	
300C	2 <sup>(1)</sup> 3	3	2 <sup>(1)</sup> 3	2 <sup>(1)</sup> 3	2 <sup>(1)</sup> 3	2 <sup>(1)</sup> 3	3	2 <sup>(1)</sup> 3
300 Limited	4 <sup>(1)</sup> 5	5	4 <sup>(1)</sup> 5	4 <sup>(1)</sup> 5	4 <sup>(1)</sup> 5	4 <sup>(1)</sup> 5	5	4 <sup>(1)</sup> 5
300 Touring	4 <sup>(1)</sup> 5	5	4 <sup>(1)</sup> 5	4 <sup>(1)</sup> 5	4 <sup>(1)</sup> 5	4 <sup>(1)</sup> 5	5	4 <sup>(1)</sup> 5
300 LX	6, 7 <sup>(1)</sup>	6	6, 7 <sup>(1)</sup>	6, 7 <sup>(1)</sup>	6, 7 <sup>(1)</sup>	6, 7 <sup>(1)</sup>	6	6, 7 <sup>(1)</sup>

<sup>(1)</sup>Khaki/Light Graystone interior trim.

## INTERIOR COLORS



	LX	Touring	Limited	300C	300C SRT8®
<b>ENGINE/TRANSMISSION</b>					
<b>2.7L DOHC 24V V6/4-speed automatic</b>	23E				
<b>3.5L SOHC High Output 24V V6/4-speed automatic</b>		26P	26L		
<b>5.7L Multi-Displacement HEMI® VVT V8/5-speed AutoStick®</b>				29T	
<b>6.1L SRT® HEMI V8/5-speed AutoStick</b>					21X
<b>MECHANICAL</b>					
<b>All-Wheel Drive</b> — (Includes 5-speed AutoStick transmission)		0	0	0	
<b>Battery-Saver Feature</b> — Enhanced, programmable to turn headlamps and interior lamps off after ignition is turned off	S	S	S	S	S
<b>Brakes</b> — 4-wheel disc with vented front and solid rear discs	S				
— 4-wheel disc antilock with vented front and solid rear discs (included with ESP)	P	S	S		
— Performance 4-wheel disc antilock with vented front and rear discs				S	
— High-performance 4-wheel disc antilock with vented 14" front and 13.8" rear discs, includes Brembo® Performance 4-piston calipers					S
<b>Engine Block Heater</b>	0	0	0	0	
<b>Speed Control</b> — Electronic with steering column-mounted controls	S	S	S	S	S
— Adaptive Cruise Control (ACC) <sup>11</sup>				0	
<b>Steering</b> — Power rack-and-pinion	S	S	S	S	
— Performance steering gear (included with Heritage Series)				S/P	
— Performance-tuned power rack-and-pinion					S
<b>Suspension</b> — Front independent short/long arm with independent 5-link rear	S	S	S	S	
— Performance suspension (included with Heritage Series)				S/P	
— High-performance lowered independent front and rear					S
<b>Tip Start System</b>	S	S	S	S	S
<b>EXTERIOR FEATURES</b>					
<b>Exhaust System</b> — Stainless steel	S	S	S		
— Stainless steel dual exhaust with bright exhaust tips				S	
— Stainless steel performance dual exhaust with bright exhaust tips					S
<b>Headlamps</b> — Chrome bezel halogen with delay	S	S			
— Chrome bezel halogen projector with delay			S	S	
— Chrome bezel Xenon High Intensity Discharge with delay (included in Protection Group II)				O/P	S
— Automatic		S	S	S	S
— SmartBeam™ Control System			S	S	S
— Fog lamps		S	S	S	S
<b>Mirrors</b> — Power fixed, black	S				
— Power fixed, body-color, heated (Bright on Limited)		S	S		
— Power folding, body-color, heated, with memory, driver auto-dimming and auto-adjust in Reverse					S
— Power folding, chrome, heated, with memory, driver auto-dimming and auto-adjust in Reverse				S	
— Power folding, chrome, heated, with memory, driver and front-passenger auto-dimming and auto-adjust in Reverse and approach lamps (included with Luxury Group II and Heritage Series)				P	
<b>Molding</b> — Bodyside, body-color, with chrome insert	0	S	S		
— Bodyside, with chrome and integrated 300C badge				S	S
— Bodyside, chrome and integrated Heritage badge (included with Heritage Series)				P	
<b>Remote Keyless/Illuminated Entry System</b> — Includes 2 transmitters	S	S	S	S	S
<b>Sunroof</b> — Power with one-touch open/close and vent feature		0	0	0	S
<b>Tires</b> — P215/65R17 BSW All-Season Touring	S				
— P225/60R18 BSW All-Season Touring		S	S		
— P225/60R18 All-Season Touring self-sealing (included with Protection Group)		0	P	S	
— 245/45R20 All-Season performance (included with Heritage Series)				P	
— 245/45ZR20 All-Season performance					S
— 245/45ZR20, 255/45ZR20 performance					0

	LX	Touring	Limited	300C	300C SRT8®
<b>EXTERIOR FEATURES (CONTINUED)</b>					
<b>Wheels</b> — 17" aluminum	S				
— 18" aluminum, chrome-clad		S	S	S	
— 20" aluminum, ultra-brite (included with Heritage Series)				P	
— 20" aluminum, ultra-brite SRT® designed					S
— 20" 12-spoke chrome-plated wheel (Authentic Chrysler Accessory)				0	0
— 18" 9-spoke chrome-plated wheel (Authentic Chrysler Accessory)	0	0		0	
— 17" 7-spoke chrome-plated wheel (Authentic Chrysler Accessory)	0	0			
<b>Window</b> — Power with driver's one-touch auto up/down	S	S			
— Power with driver's and front-passenger one-touch auto up/down, and antipinch feature			S	S	S
<b>Windshield Wipers</b> — 2-speed with variable intermittent mode	S	S			
— Rain-sensing automatic			S	S	S
<b>INTERIOR FEATURES</b>					
<b>Air Conditioning</b> — Manual temperature control	S				
— Automatic dual zone temperature control		S	S	S	S
<b>Air Filtration</b> — Particulate air filter	S	S	S	S	S
<b>Console</b> — Floor, with 2 cup holders, coin holder, CD and cell phone storage with 12V auxiliary power outlet, and rear-seat heat and A/C outlets	S	S	S	S	S
<b>Defroster</b> — Rear window	S	S	S	S	S
<b>Door Locks</b> — Power, speed-sensitive locking, child-protection rear	S	S	S	S	S
<b>Electronic Vehicle Information Center (EVIC)</b> — Reconfigurable driver-interactive up to 128-function information display with steering wheel-mounted controls			S	S	S
<b>HomeLink® Universal Transceiver</b> — Programmable, 3-function with remote controls for garage door opener, interior/exterior home lighting or security devices			S	S	S
<b>Interior Accents</b> — Bright on center stack, dashboard, door trim, pulls and shift knob	S	S	S	S	
— Tortoiseshell-style trim includes steering wheel upper trim, interior door pull handles and dashboard inserts				S	
— Genuine California Walnut wood trim includes steering wheel, upper trim, interior door pull handles and dashboard inserts (included with Luxury Group II and Heritage Series)			S	O/P	
— Carbon fiber hydrographic					S
<b>Lighting</b> — Dual front map, rear reading with theater-dimming, front door courtesy, glove box, and trunk lamp	S	S	S	S	S
— LED illuminated front cup holders	S	S	S	S	S
— LED illuminated front and rear map pockets			S	S	S
<b>Memory System</b> — Controls driver's seat, radio presets, power steering column, exterior mirrors and power adjustable pedals for 2 drivers (included with Heritage series)				S/P	S
<b>Mirrors</b> — Rearview, day/night	S	S			
— Rearview, auto-dimming (included with uconnect phone)	P	P	S	S	S
— Visor vanity, illuminated driver and passenger side	S	S	S	S	S
<b>Pedals</b> — Power adjustable	0	S	S		
— Power adjustable with Memory System				S	S
<b>Performance Display</b> — Includes Digital Speedometer; 1/4 mile time and speed, 1/8 mile time and speed, braking distance, 0-60 mph time and G-forces meter longitudinal and lateral (included with SRT Option Group I)					P
<b>Power Accessory</b> — 12V auxiliary power outlet located in center console with delay feature	S	S	S	S	S
<b>Steering Column</b> — Tilt/telescoping, manual	S	S	S		
— Power tilt/telescoping, with memory				S	S
<b>Temperature Display</b> — Outside, located in instrument cluster	S	S			
— Outside, with compass, located in EVIC			S	S	S

	LX	Touring	Limited	300C	300C SRT8®
<b>SEATING</b>					
<b>Front</b> — Front low-back buckets with seatback map pockets	S	S	S	S	
— Front low-back performance buckets (included with Heritage Series)				P	S
— 8-way power driver's seat	S	S			
— Heated 8-way power driver's and front-passenger seat		S	S	S	S
— Manual driver's/front-passenger adjustable lumbar	S	S	S	S	S
<b>Rear</b> — 60/40 split-folding rear bench with armrest and cup holders	S	S	S	S	S
— Heated second-row seats (included with Luxury Group II and Heritage Series)				P	

## ENTERTAINMENT SYSTEMS

<b>Radios</b> — AM/FM stereo radio with single-disc CD player, changer controls and auxiliary audio input jack	S				
<b>uconnect</b> — uconnect tunes – AM/FM/CD/DVD <sup>(2)</sup> /30GB Hard Drive/MP3 radio (included on Heritage Series)		S	S	S/P	S
— uconnect gps – AM/FM/CD/DVD <sup>(2)</sup> /30GB Hard Drive/MP3 radio with navigation and touch screen/voice recognition operation and real-time traffic alerts from SIRIUS Satellite Radio (included in SRT® Option Group II)			O	O	P
— uconnect studios – Includes SIRIUS Satellite Radio with one-year subscription		S	S	S	S
— uconnect studios – SIRIUS Backseat TV™ with one-year subscription (included with VES® system)				O	O
— uconnect web — Make your vehicle a WiFi Hotspot. Subscription required, sold separately. (Authentic Chrysler Accessory by Mopar)	O	O	O	O	O
<b>Sound Systems</b> — 4 speakers (6 speakers included with Limited 26L)	S	S			
— 6-speaker Boston Acoustics® sound system with 276-watt digital amplifier		O	S	S	S
— 8-speaker Boston Acoustics® sound system (including subwoofer), Dolby Pro Logic II Surround and 368-watt digital amplifier (included on Heritage Series and Luxury Group II)				P	
— 13 SRT High-Performance KICKER® speakers (8 locations) with a 322-watt digital amplifier and 100-watt subwoofer amplifier					O
<b>Vehicle Entertainment System (VES®)</b> — DVD system includes 7-inch screen located in center console armrest, remote control, 2 wireless headsets, and faceplate audio and video input jacks. (Requires AM/FM/cassette/6-disc CD or GPS navigation system)				O	O

## SAFETY AND SECURITY

<b>Air Bags<sup>(3)</sup></b> — Advanced multistage driver and front-passenger	S	S	S	S	S
— Supplemental front-seat side air bags and side-curtain for front and rear outboard occupants (included with Protection Group, Protection Group II, SRT Option Group I, and Heritage Series)	P	P	P	P	P
<b>Child Seat Anchor System (LATCH)</b> — Mounts for two child seats in the rear help ease the installation of compatible aftermarket child seats	S	S	S	S	S
<b>Electronic Stability Program<sup>(4)</sup></b> — Includes Brake Assist and all-speed traction control	O	S	S	S	S
<b>ParkSense® Rear Park Assist System<sup>(5)</sup></b> — (Included with Protection Group II)				P	S
<b>Remote Start System</b>			S	S	S
<b>Security Alarm</b>			S	S	S
<b>Tire Pressure Monitoring Warning Lamp System</b> — (Monitoring display on 300C and 300C SRT8)	S	S	S	S	S
<b>uconnect phone<sup>(6)</sup></b> — Included with auto-dimming rearview mirror and iPod® interface	P	P	P	P	P

## 300 SPECIALTY SERIES

<b>Executive Series</b> — Long Wheelbase Prep Group to create 6 inches in length customized by Accubuilt and available with several customized options. Only Chrysler LLC authorizes 300 stretch with Chrysler full warranty (26Z CPO5)				O	
<b>Heritage Series</b> — Genuine California walnut interior accents, exclusive Napa leather trim, 8-speaker Boston Acoustics® (including subwoofer) sound system with 368-watt amplifier, heated second-row seats, performance driver and front passenger seats, chrome bodyside molding, power multifunctional exterior mirrors, Berber floor mats, performance steering gear, supplemental front seat-mounted side air bags, <sup>(3)</sup> side-curtain air bags, <sup>(3)</sup> and uconnect tunes <sup>(2)</sup>				O	

## PACKAGES

	LX	Touring	Limited	300C	300C SRT8®
<b>Luxury Group II</b> — Power folding, chrome, heated, with memory, supplemental signals, driver and passenger auto-dimming and auto-adjust exterior mirrors with approach lamps, heated second-row seats, power adjustable pedals, California walnut wood interior accents, surround sound				O	
<b>Protection Group</b> — Includes front and rear supplemental side-curtain air bags, <sup>(3)</sup> supplemental front seat-mounted side air bags, <sup>(3)</sup> uconnect phone, and self-sealing tires	O		O		
<b>Protection Group II</b> — Includes front and rear supplemental side-curtain air bags, <sup>(3)</sup> supplemental front seat-mounted side air bags, <sup>(3)</sup> uconnect phone and ParkSense® Rear Park Assist System <sup>(5)</sup>				O	
<b>SRT Option Group I</b> — Includes front and rear supplemental side-curtain air bags <sup>(3)</sup> and supplemental front seat-mounted side air bags, <sup>(3)</sup> and Performance Display					O
<b>SRT Option Group II</b> — Includes uconnect gps <sup>(2)</sup> (requires sunroof)					O

S = Standard. P = Included in package noted in parentheses. O = Optional.

<sup>(1)</sup>ACC is a driver convenience system, not a substitute for active driver involvement. The driver must remain aware of traffic conditions and be prepared to use brakes to avoid collisions. <sup>(2)</sup>uconnect in-dash DVD capability is not available in all states. See your dealer for details. <sup>(3)</sup>Always sit properly in the seat with the seat belt fastened. Children 12 and under should always be in a backseat correctly using an infant or child restraint system, or the seat belt positioned correctly for the child's age and weight. <sup>(4)</sup>No system, no matter how sophisticated, can repeal the laws of physics or overcome careless driving actions. Performance is limited by available traction, which snow, ice and other conditions can affect. When the ESP warning lamp flashes, the driver needs to use less throttle and adapt speed and driving behavior to prevailing road conditions. Always drive carefully, consistent with conditions. Always wear your seat belt. <sup>(5)</sup>Always check entire surroundings before backing up. <sup>(6)</sup>Must use Bluetooth® compatible phone.

SmartBeam is a trademark of Chrysler LLC. Chrysler, 300, Mopar, SRT8, HEM, Sentry Key, ParkSense, and uconnect are registered trademarks of Chrysler LLC. Bluetooth is a registered trademark of Bluetooth SIG, Inc. Boston Acoustics is a registered trademark of Boston Acoustics, Inc. Brembo is a registered trademark owned by Johnson Controls, Inc. KICKER is a registered trademark of Stillwater Designs and Audio, Inc. iPod is a registered trademark of Apple, Inc. All rights reserved. "SIRIUS," "SIRIUS Backseat TV," the SIRIUS dog logo, and related marks are trademarks of SIRIUS Satellite Radio Inc. All other trademarks, service marks and logos are the property of their respective owners. All rights reserved. Subscription required. Pricing and programming contents are subject to change. Not available in Alaska and Hawaii. For full Terms & Conditions, visit SIRIUS.com.

	LX	Touring/Limited	300C	300C SRT8
<b>ENGINE SPECIFICATIONS</b>				
<b>Engine Type</b>	2.7L V6	3.5L High Output V6	5.7L VVT HEMI® V8 with MDS	6.1L SRT HEMI V8
<b>Horsepower (SAE net @ rpm)</b>	178 @ 5,500	250 @ 6,400	359 @ 5,150	425 @ 6,000
<b>Torque (lb-ft @ rpm)</b>	190 @ 4,000	250 @ 3,800	389 @ 4,250	420 @ 4,800
<b>Displacement (cu in)</b>	167	214	345	370
<b>Bore x Stroke (mm)</b>	86x78.5	96x81	99.5x90.9	103x90.9
<b>Valve Train Configuration</b>	DOHC 24-valve	SOHC 24-valve	Pushrod 16-valve	Pushrod 16-valve
<b>Compression Ratio</b>	9.7:1	9.9:1	9.6:1	10.3:1
<b>Final Drive Ratio</b>	3.90:1	3.64/3.07 (AWD)	2.82/3.07 (AWD)	3.06

## WEIGHT AND CAPACITIES

<b>Recommended Fuel</b>	Unleaded Regular	Unleaded Mid-Grade <sup>(7)</sup>	Unleaded Mid-Grade <sup>(7)</sup>	Unleaded Premium
<b>Fuel Tank Capacity (gal)</b>	18	18/19 (AWD)	19	19
<b>Fuel Economy (city/hwy)<sup>(8)</sup></b>	18/26	17/25 (RWD)/17/23 (AWD)	16/25 (RWD)/16/23 (AWD)	13/19
<b>Base Curb Weight (lb) (RWD/AWD)</b>	3,721	3,767/4,041	4,046/4,251	4,160
<b>Towing Capacity<sup>(9)</sup> (lb)</b>	1,000	2,000	2,000	Not Recommended

## EXTERIOR DIMENSIONS <sup>(10,11)</sup>

<b>Wheelbase</b>	120.0
<b>Overall Length</b>	196.9
<b>Overall Width</b>	74.1
<b>Overall Height</b>	58.4
<b>Track</b> — Front/Rear	63.0/63.1
<b>Turning Diameter (ft)</b>	38.9

<sup>(7)</sup>Unleaded Mid-Grade fuel recommended, Unleaded Regular acceptable. <sup>(8)</sup>EPA est mpg. <sup>(9)</sup>When properly equipped. <sup>(10)</sup>Based on LX dimensions. <sup>(11)</sup>Dimensions in inches unless otherwise noted.

## INTERIOR DIMENSIONS <sup>(10,11)</sup>

<b>Maximum Seating Capacity</b>	5
<b>Head Room</b> — Front/Rear	38.7/38.0
<b>Leg Room</b> — Front/Rear	41.8/40.2
<b>Shoulder Room</b> — Front/Rear	59.4/57.7
<b>Hip Room</b> — Front/Rear	55.9/55.9
<b>Capacity</b> — Passenger Volume (cu ft)	106.6
— Cargo Volume (cu ft)	17.2

## CHRYSLER.COM

Our Web site offers detailed information on all Chrysler products. You can virtually assemble any vehicle you like. Simply choose the model with your favorite color combinations, equipment, and features — and then price it all out.

## CALL 1-800-CHRYSLER.

Our friendly and knowledgeable product information specialists are available seven days a week, 8 a.m.–midnight (EST) to answer your questions.

**Lifetime Powertrain Limited Warranty.** No deductible. See dealer for a copy of limited warranty details. Non-Transferable. Not available on SRT® Hybrid System components (including transmission) and certain fleet vehicles.

**Warranty.** New Chrysler vehicles are covered by a 3-year or 36,000-mile Basic Limited Warranty. See your dealer for a copy of this limited warranty. Excludes normal maintenance and wear items.

**Chrysler Financial.** Chrysler Financial delivers Chrysler, Jeep, and Dodge customers a personal, worry-free automotive financing experience. More than just another finance company with competitive rates, Chrysler Financial stands behind you through life's twists and turns by offering fast approvals, flexible terms and unparalleled personalized service. Visit [cf.com](http://cf.com) or your Chrysler dealer to discover all that Chrysler Financial offers. Taking care of you, all along the way.

**Chrysler Auto Insurance!**<sup>(1)</sup> The only insurance guaranteed to repair your vehicle using Authentic Chrysler Collision Repair Parts by Mopar for as long as you own your Chrysler vehicle, and up to \$100 off your deductible when those repairs are done at a Chrysler dealership — all at rates that are tough to beat. For a free quote, visit [chryslerautoinsurance.com](http://chryslerautoinsurance.com) or call (877)244-1531 and mention keycode QL8XXX.

**Chrysler Service Contracts.** Your Chrysler is one of the most inspiring vehicles on the road. Why not protect your investment with a Chrysler Service Contract or Maintenance Plan? For more information, see your Chrysler dealer, call (800)442-2666 or visit [servicecontracts.chrysler.com](http://servicecontracts.chrysler.com).

**Authentic Chrysler Accessories by Mopar** are designed specifically for your Chrysler vehicle for exceptional fit, finish and performance. Visit your dealership or [mopar.com](http://mopar.com).

## VISIT YOUR DEALER.

Your Chrysler dealer's knowledgeable and professionally trained staff will guide you through the shopping process with expert advice.

**uconnect.** This suite of integrated digital systems bundles entertainment, information, and communication. For more information, visit your dealer.

**SIRIUS.** SIRIUS Satellite Radio delivers over 130 channels, including 100% commercial-free music, sports, news, talk, entertainment, traffic and weather. Factory-installed SIRIUS Satellite Radio includes a one-year subscription. For more information, go to [SIRIUS.com](http://SIRIUS.com).

**SmartWay.** The SmartWay® certification system identifies each vehicle's air pollution and greenhouse gas performance.<sup>(2)</sup> Lower emissions earn a higher score, and those vehicles with the best scores receive certification. 300, when equipped with a 3.5L engine, is SmartWay certified.

**Chrysler Rewards Visa**<sup>(3)</sup> Earn 5 points per dollar charged at your Chrysler dealership and 1 point per dollar everywhere Visa® is accepted. Whether you're saving points for your down payment or for your vehicle's scheduled maintenance, it pays to be a Chrysler Rewards Visa cardholder. For more information or to apply, visit [chryslercreditcard.com](http://chryslercreditcard.com) or call (800)478-6179.

**Chrysler Gift Gallery** pays tribute to the finer things in life. With everything from men's and women's apparel to accessories and designer collectibles, you are sure to take your style to the next level. View the entire collection of authentic merchandise at [chrysler.com/giftgallery](http://chrysler.com/giftgallery).

**Honoring Those Who Serve.** Chrysler LLC proudly supports the members of the U.S. Armed Forces and their families.

<sup>(1)</sup>Insurance is underwritten by member companies of American International Group, Inc. <sup>(2)</sup>Based on 2008 EPA SmartWay Designation. Please visit [www.epa.gov/greenvehicles](http://www.epa.gov/greenvehicles) for a list of the specific vehicle types that meet the SmartWay standards. SmartWay is a service mark of the U.S. Environmental Protection Agency. <sup>(3)</sup>The Chrysler Rewards Visa credit card is issued by FIA Card Services, N.A.



All product illustrations, specifications and competitive comparisons are based upon current information at the time of publication approval. Although descriptions are believed correct, complete accuracy cannot be guaranteed. Chrysler LLC reserves the right to make changes at any time, without notice or obligation, in prices, specifications, equipment, colors and materials, and to change or discontinue models. Some of the equipment shown or described throughout this catalog is available at extra cost and/or may be subject to late availability. See your dealer for the latest information.

Authentic Chrysler Accessories by Mopar shown below include Premium Chrome Grille,<sup>(1)</sup> 18" 9-Spoke Chrome-Plated Aluminum Wheels and Side Window Air Deflectors.



## AUTHENTIC CHRYSLER ACCESSORIES

When you enhance your 300 with Authentic Chrysler Accessories by Mopar, you gain far more than sophisticated style, premium protection, powerful performance or engaging entertainment. You also benefit from the authentic difference found only in an original equipment accessory. It is a difference you will recognize in the higher standards and tighter tolerances required of original equipment accessories. And one you will appreciate in our stricter testing measures, from impact performance tests to harsh on- and off-road durability testing. Choose the full line of accessories that feature a fit, finish and functionality designed specifically for your 300. Visit us at [mopar.com](http://mopar.com).

<sup>(1)</sup>Not all Mopar Grilles are compatible with Adaptive Cruise Control.

AUTHENTIC CHRYSLER ACCESSORIES

